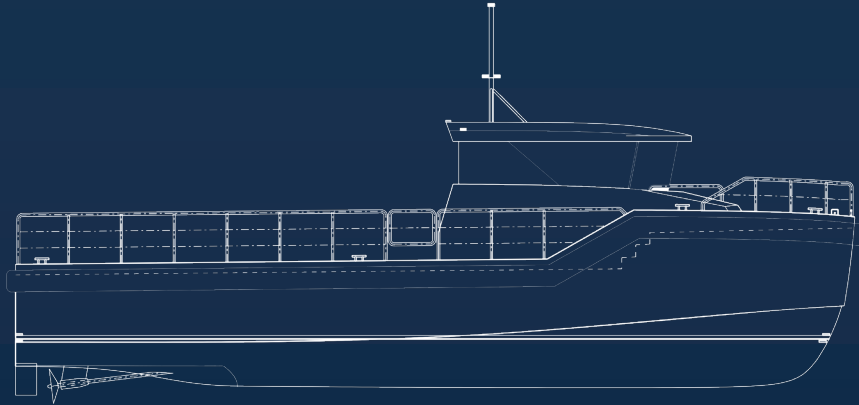




WORK BOAT

TURKEY



12m Fast Aluminum Vessel
FAWB12.15M



GENERAL

Type: Fast Aluminum Vessels

Class: BV hull attestation

Flag: ISR

Designer: Ginton Naval architects

Material: Aluminum

DIMENSIONS

L.O.A: 12.15m

Beam: 4.4m

Draft: 0.95m

TANK CAPACITIES

Fuel Oil: 1.25m³

Fresh water: 0.35m³

Sewage: 0.35m³

PERFORMANCE

Speed: 24 Knots

Clear Aft Deck Space: 20m²

PROPULSION

Main Engines: Yanmar 4LHA STP

Total Power: 2 x 240hp @ 3300rpm

Propellers: 2x Fixed pitch 4 blades

AUXILIARY EQUIPMENT

Generator: 1 X Sole 380V/12Kw

ACCOMMODATION

1 Cabins

1 X crew cabin with head and shower

NAVIGATION EQUIPMENT

Radar: RD418HD 4Kw

GPS: Raymarine RS150

Autopilot: Raymarine

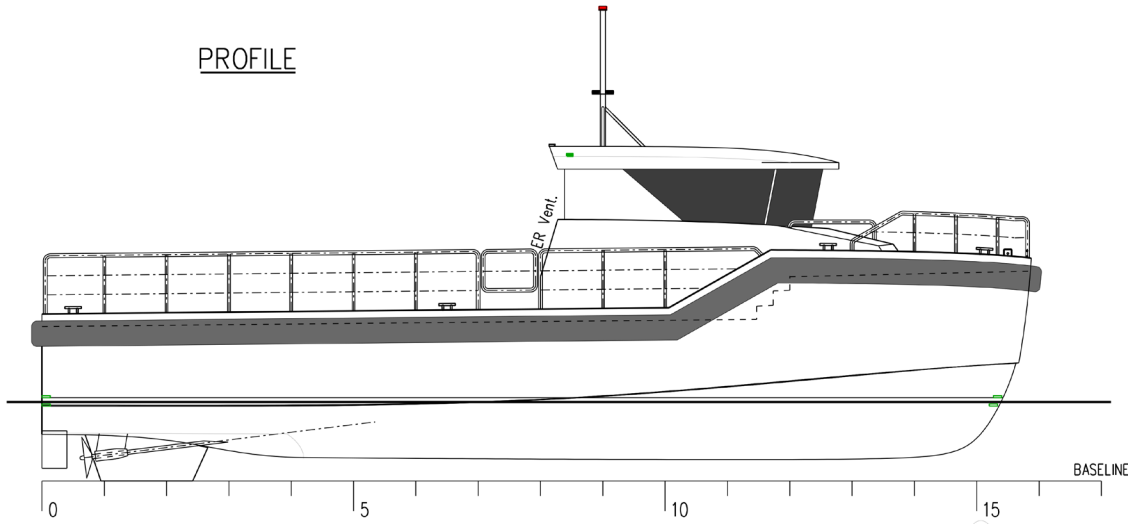
AIS: Raymarine AIS650 Class B

Echosounder: Raymarine DST800

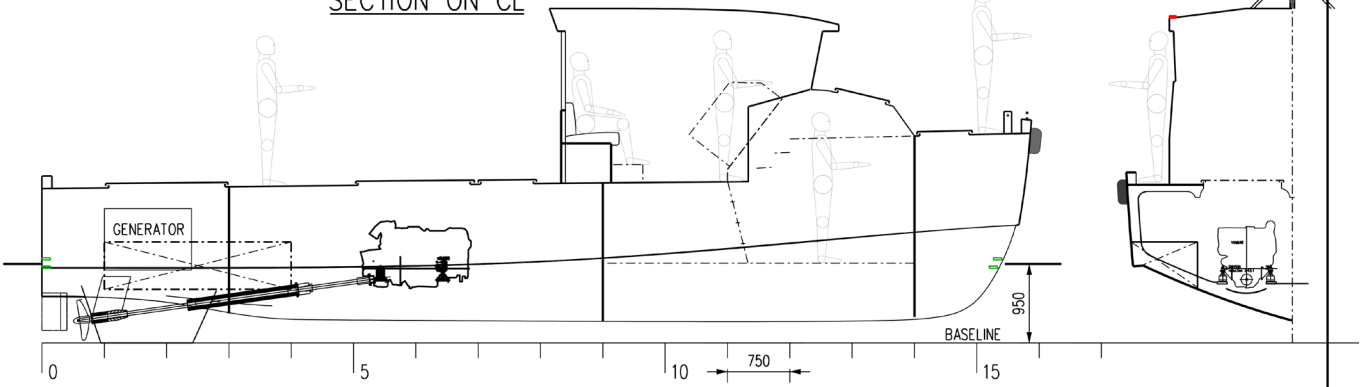
VHF/DSC: Ramarine Ray70

12m Fast Aluminum Vessel

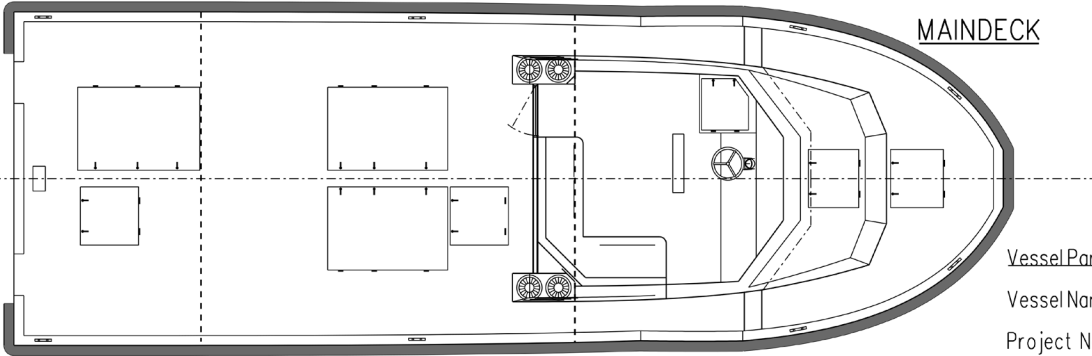
PROFILE



SECTION ON CL

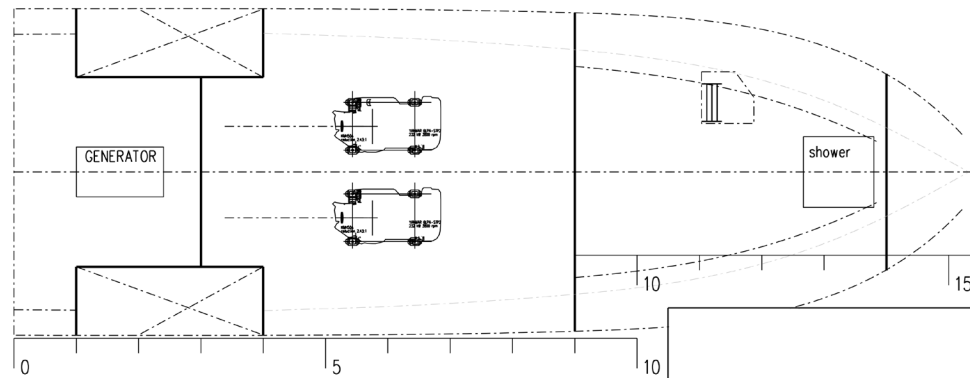


MAINDECK



Vessel Particulars:

Vessel Name Daphna
Project No: NB03
Vessel Type: Service Boat
LOA (m): 12,15
Breadth (m): 4,40
Depth (m): 1,59
Main Engine amount: 2
Main Engines Power (kW): 354
(2x YANMAR 4LHA STP 177kW)



Rev.	Date	Description	Drawn
E	15-06-2017	UPDATE	
E	14-06-2017	UPDATE	lvK
D	24-02-2017	Text vessel particulars	lvK
C	20-02-2017	UPDATE	lvK